



6.5.2024

Registration Number: [2010/095051/23](#) Tax No: [9520753162](#) VAT No: [4840258182](#) cidb No: 237299  
P.O. Box 1200, Centurion, 0046. E-mail: [info@emainteconsulting.co.za](mailto:info@emainteconsulting.co.za) Website:  
[www.emainteconsulting.co.za](http://www.emainteconsulting.co.za)  
P: +27 11 057 6463/+27 76 807 9388/ F: +27 86 699 3086/ +27865515575.

# BUSINESS PROFILE- EMAINTE

Engineering Management and Consulting  
services

## ABSTRACT

EMaintE Consulting cc is in the Business of; Maintenance Engineering Consulting, CMMS Software provision and Implementation Training, Systems Energy Efficiency Optimization, Sustainability, Renewable Energy, Contracting and Project Management.

*Essential Maintenance Engineering*  
EMaintE



Registration Number: [2010/095051/23](#) Tax No: [9520753162](#) VAT No: [4840258182](#) cidb No: 237299  
P.O. Box 1200, Centurion, 0046. E-mail: [info@emainteconsulting.co.za](mailto:info@emainteconsulting.co.za) Website:  
[www.emainteconsulting.co.za](http://www.emainteconsulting.co.za)  
P: +27 11 057 6463/+27 76 807 9388/ F: +27 86 699 3086/ +27865515575.

---



## [BUSINESS PROFILE-EMAINTE]

EMaintE Consulting CC is in the business of Maintenance Engineering Consulting, CMMS Software and Training, Systems Energy Efficiency Optimization, Sustainability, Renewable Energy, Contracting and Project Management.



Registration Number: 2010/095051/23 Tax No:9520753162 VAT No:4840258182 cidb No: 237299  
P.O. Box 1200, Centurion, 0046. E-mail: [info@emainteconsulting.co.za](mailto:info@emainteconsulting.co.za) Website:  
[www.emainteconsulting.co.za](http://www.emainteconsulting.co.za)  
P: +27 11 057 6463/+27 76 807 9388/ F: +27 86 699 3086/ +27865515575.

**Contents**

	Page
<b>COMPANY PROFILE</b> .....	3
BUSINESS .....	3
ACTIVITY .....	3
CONTACT AND BANKING INFO .....	4
BACKGROUND: .....	5
<b>OVERVIEW</b> .....	6
<b>EQUITY PROFILE AND BLACK ECONOMIC EMPOWERMENT</b> .....	6
AFFIRMATIVE CAREER DEVELOPMENT POLICY: .....	6
STATEMENT .....	7
OBJECTIVES .....	8
SUSTAINABILITY .....	8
WORK EXPERIENCE .....	8
<b>MANAGEMENT OF EMAINTE CONSULTING:</b> .....	13
PERSONAL PROFILE: Gracious Banda. ....	13
Membership in Professional Societies: .....	13
SocEnv- CEnv can. ....	13
General .....	14
Specific .....	14
Key Advisor : Dr Michael M. Mshali PhD, MSc (Civil Eng).....	14
EMaintE ORGANISATION CHART:.....	15
ATTACHMENTS: .....	15
PRIVACY:.....	15
EMaintE Company documents:.....	16
PROFESSIONAL AFFILIATES IN CMMS .....	22
CWORKS SYSTEMS AND 4C SYSTEMS INTERNATIONAL- Profiles:.....	22
About CWORKS SYSTEMS INTERNATIONAL .....	22
<b>CWORKS and 4C Management Teams</b> .....	23



Registration Number: [2010/095051/23](#) Tax No: [9520753162](#) VAT No: [4840258182](#) cidb No: 237299  
P.O. Box 1200, Centurion, 0046. E-mail: [info@emainteconsulting.co.za](mailto:info@emainteconsulting.co.za) Website:  
[www.emainteconsulting.co.za](http://www.emainteconsulting.co.za)  
P: +27 11 057 6463/+27 76 807 9388/ F: +27 86 699 3086/ +27865515575.

## COMPANY PROFILE

FOR

EMaintE Consulting c.c.

[CK 2010/095051/23](#)

### [Essential Maintenance Engineering Consulting](#)

#### BUSINESS

**ACTIVITY:** MAINTENANCE ENGINEERING CONSULTING, CMMS SOFTWARE AND TRAINING, ENERGY EFFICIENCY, SUSTAINABILITY, RENEWABLE ENERGY, CONTRACTING AND PROJECT MANAGEMENT.



Registration Number: [2010/095051/23](#) Tax No: [9520753162](#) VAT No: [4840258182](#) cidb No: 237299  
P.O. Box 1200, Centurion, 0046. E-mail: [info@emainteconsulting.co.za](mailto:info@emainteconsulting.co.za) Website:  
[www.emainteconsulting.co.za](http://www.emainteconsulting.co.za)  
P: +27 11 057 6463/+27 76 807 9388/ F: +27 86 699 3086/ **+27865515575.**

## CONTACT AND BANKING INFO:

PHYSICAL ADDRESS:	4321 ISIKALU STR BIRCH ACRES X25 KEMPTON PARK 1619	Portion 1/125 JU Kingstonevale Farm Nelspruit 1200
-------------------	---	---

POSTAL ADDRESS :	PO BOX 11200 CENTURION 0046	PO Box 26010 Steiltes 1213
------------------	-----------------------------------	----------------------------------



E-mail address: [info@emainteconsulting.co.za](mailto:info@emainteconsulting.co.za) / [info@emainteconsulting.com](mailto:info@emainteconsulting.com)

Website address: [www.emainteconsulting.co.za](http://www.emainteconsulting.co.za) / [www.emainteconsulting.com](http://www.emainteconsulting.com)

PHONE : 011 057 6463 /0137471001/076 807 9388 /0768924246.

FAX NO :+27866993086/  
+27865515575

BANKING INFO: email your request to us via our website.



Registration Number: [2010/095051/23](#) Tax No: [9520753162](#) VAT No: [4840258182](#) cidb No: 237299  
P.O. Box 1200, Centurion, 0046. E-mail: [info@emainteconsulting.co.za](mailto:info@emainteconsulting.co.za) Website:  
[www.emainteconsulting.co.za](http://www.emainteconsulting.co.za)  
P: +27 11 057 6463/+27 76 807 9388/ F: +27 86 699 3086/ +27865515575.

## BACKGROUND:

The core function of **EMaintE Consulting CC**, hereinafter called '**EMaintE**' is to Facilitate, Train and implement Modern Asset Maintenance and Efficient Energy Management methods with a key focus on industries such as businesses of Manufacturing, Metal processing and/or recycling, Buildings and facilities maintenance, Oil and gas or Petrochemical, Laundries, Local / Regional councils and government departments, Schools, Churches or indeed any Maintenance Contracting activity execution.

**EMaintE**'s business rationale and strategic intent is to create a national as well as a regional network of World Class Asset Maintenance, Energy Efficiency and Project Management services and to fully make a mark in the field of Systematic Integrated Maintenance Engineering Management in South Africa and the rest of Sub-Saharan Africa.

The rationale and strategic trust of our black economic empowerment model is aimed to redress structural distortions and common deficiencies in the economic system of Africa such as;

- Supply and demand side impediments to black economic development pivoted on the continuous marginalization of the black majority
- Exploration on especially the historically disadvantaged individuals of the youth, women and disabled from rural communities
- Deprivation of ready access to finance and business networks



Registration Number: [2010/095051/23](#) Tax No: [9520753162](#) VAT No: [4840258182](#) cidb No: 237299  
P.O. Box 1200, Centurion, 0046. E-mail: [info@emainteconsulting.co.za](mailto:info@emainteconsulting.co.za) Website:  
[www.emainteconsulting.co.za](http://www.emainteconsulting.co.za)  
P: +27 11 057 6463/+27 76 807 9388/ F: +27 86 699 3086/ +27865515575.

## OVERVIEW

- The company was established in order to affirm the changed environment and Government's socio-economic objectives and the principles of the general Economic emancipation.
- Currently the company has a 100% black shareholding and 100% black key personnel and organizational structure.
- The management team comprises qualified professionals who are well-rounded in fundamentals with a wide background of knowledge and practical experience and flexibility of mind to adapt themselves to rapid technological changes in the facilities, plant and equipment as well as works services, Energy systems management and Project Management.

## EQUITY PROFILE AND BLACK ECONOMIC EMPOWERMENT

**EMaintE** has a meaningful and active broad based black economic empowerment strategy. The company is currently 100% owned and managed by historically disadvantaged individuals.

### AFFIRMATIVE CAREER DEVELOPMENT POLICY:

- **EMaintE** is an Affirmative Business Enterprise (ABE) which has never, and will not, discriminate against the disabled, women and individuals or groups of different races, creed or colour.
- It also believes that a formal and structured approach is required to contribute to the normalization processes in South Africa, Africa and the globe as a whole.
- This overall need is addressed by **EMaintE**'s human resources development programme.
- Affirmative action forms, as it always has, an integral part of this programme. The policy reads as follows:



Registration Number: [2010/095051/23](#) Tax No: [9520753162](#) VAT No: [4840258182](#) cidb No: 237299  
P.O. Box 1200, Centurion, 0046. E-mail: [info@emainteconsulting.co.za](mailto:info@emainteconsulting.co.za) Website:  
[www.emainteconsulting.co.za](http://www.emainteconsulting.co.za)  
P: +27 11 057 6463/+27 76 807 9388/ F: +27 86 699 3086/ +27865515575.

## STATEMENT

### Vision:

- While being committed to providing innovative, optimal, efficient, cost-effective Engineering Services to meet the exacting needs of its clients and maintaining high ethical and professional standards, **EMaintE** boasts the notion that a scientific approach to Systems Maintenance Management that broadens with technological changes can only be second to none! Our Simplicity shall be our inspiration to all.

### Mission:

We daily challenge our past and believe that through the grace and power of the Creator of everything, together we are able to improve the future of the land we live in.

### Values:

1. We uphold the notion that a scientific approach to Systems Operations & Maintenance Management broadens with technological changes and that such an approach can only be second to none!
2. While advocating competition in the open market, **EMaintE** believes transparency and accountability in its business dealings with other entities will enhance information sharing which is a powerful tool for personal growth, self-actualization and zeal, creativity, empowerment and networking which all add up to fulfillment and success for all.
3. We pride ourselves in not compromising our principle; “create room for improvement in any area of concern to anyone whilst appreciating the will power of positive thinking with determination to achieve a goal or at least part of a goal in an envisaged time frame”.
4. **EMaintE** shall continually strive, while abiding by all legislative regulations applicable to its operations and services, to serve its customers, our company, our country and each other as well as our cosmos to the highest possible level.





Registration Number: [2010/095051/23](#) Tax No: [9520753162](#) VAT No: [4840258182](#) cidb No: 237299  
P.O. Box 1200, Centurion, 0046. E-mail: [info@emainteconsulting.co.za](mailto:info@emainteconsulting.co.za) Website:  
[www.emainteconsulting.co.za](http://www.emainteconsulting.co.za)  
P: +27 11 057 6463/+27 76 807 9388/ F: +27 86 699 3086/ +27865515575.

## OBJECTIVES

- ◆ Provide competitively priced and affordable Technologies for both Modern Maintenance and Energy Efficiency management.
- ◆ Help Create a more sustainable and “greener” world
- ◆ Improve our employees’, local and global citizens’ lives

## SUSTAINABILITY

**EMaintE** has a policy of aligning itself with the current best practices in global sustainability by sticking to continued research and development and innovation in the optimization systems management with a focus on beneficiation or value-add attained when systems are made reliable and optimally utilised. **EMaintE** advocates use of PESTLE analysis to make sure of being abreast with the Political, Economic, Social, Technological, Legal and Environmental spheres.

### WORK EXPERIENCE - (Visit our website for further information)

- Combined experience in Engineering Projects exceeds 30 years.
- The company is fairly new, however the management team of **EMaintE** have a lot of experience and Exposure in the field of Operations and Maintenance Management as well as Industrial Energy Efficiency and Renewable Energy Implementation activities but also Project Planning, designing and management especially Facilities and Building Projects Management.
- Tabulated data (**Table 1 and 1A**) below is a record of some of our locally based clients who are current users of our Computerized Maintenance Management System (4C and CWORKS CMMS) Software as a product but also to whom we have rendered our Consultancy and/or training services and continue to provide support.



6.5.2024

Registration Number: [2010/095051/23](#) Tax No:[9520753162](#) VAT No:[4840258182](#) cidb No: 237299  
 P.O. Box 1200, Centurion, 0046. E-mail: [info@emainteconsulting.co.za](mailto:info@emainteconsulting.co.za) Website:  
[www.emainteconsulting.co.za](http://www.emainteconsulting.co.za)  
 P: +27 11 057 6463/+27 76 807 9388/ F: +27 86 699 3086/ **+27865515575.**

TABLE1:

WORK PERFORMED	COMPANY/ENTITY	CONTACT PERSON / e-mail address	PROJECT VALUE	PERIOD
Maintenance Engineering Consulting, CMMS Software Implementation and Training, Sustainability, Systems Energy Efficiency Optimization, Renewable Energy, Contracting and Project Management	Premier Foods Group, SA Metal Group, Contour Global- KivuWatt, Legacy Hotels Group	<a href="mailto:Hein.Viljoen@PremierFMCG.com">Hein.Viljoen@PremierFMCG.com</a> ; <a href="mailto:jOnathan.holtzhausen@sametal.co.za">jOnathan.holtzhausen@sametal.co.za</a> <a href="mailto:ronald.cheruiyot@contourglobal.com">ronald.cheruiyot@contourglobal.com</a> <a href="mailto:lbekker@legacyhotels.co.za">lbekker@legacyhotels.co.za</a>	<b>R4.5million</b>	May 2016 to October 2018.
Medium size company Systems Energy Efficiency Optimization, Renewable Energy, Contracting and Project Management	Various Private Industries throughout RSA under NBI- PSEE	Dr. Peter Mukoma <a href="mailto:info@psee.org.za">info@psee.org.za</a>	<b>R2.5million</b>	May 2014 - November 2015.
Supply and install CMMS software, Train, implement and provide premium annual Support for 6 sites-phase 1.	Legacy Hotels Group International	<a href="mailto:michmaintman@legacyhotels.co.za">michmaintman@legacyhotels.co.za</a>	<b>R500k</b>	August 2013- March 2014
a) Preliminary high-level Budget Cost Estimates for various Works and Services equipment(s) which are or are to be integral parts of the Client Service Centre Facilities Buildings (Train Station), b) Analyze, conceptualize and design as well as redesign the Modernization of Facilities Works and Services,	Izew Engineering for PRASA (Department of Public Enterprise) Belle Ombre and Pretoria Stations.	Wezi Bonono Chipeta <a href="mailto:wezic@izewengineering.co.za">wezic@izewengineering.co.za</a>	<b>R18million</b>	June 2012- May2013



Registration Number: [2010/095051/23](#) Tax No:[9520753162](#) VAT No:[4840258182](#) cidb No: 237299  
 P.O. Box 1200, Centurion, 0046. E-mail: [info@emainteconsulting.co.za](mailto:info@emainteconsulting.co.za) Website:  
[www.emainteconsulting.co.za](http://www.emainteconsulting.co.za)  
 P: +27 11 057 6463/+27 76 807 9388/ F: +27 86 699 3086/ +27865515575.

<ul style="list-style-type: none"> <li>c) Compile Technical Specifications for Tender documentation</li> <li>d) Generate Bill of Quantities for Tender documentation</li> <li>e) Manage the Projects</li> </ul>				
Upgrade existing CMMS software, implement and provide premium annual Support	CINQPET PLASTICS (Pty) Ltd	Johan Greeff: <a href="mailto:jgreeff@cingpet.co.za">jgreeff@cingpet.co.za</a>	<b>R80k</b>	January 2013
Provision of Project Development Engineering services for ESKOM Projects	Zenith Energy and Thabo Engineering Technologies	Thabo Mncube: <a href="mailto:info@zenithenergy.co.za">info@zenithenergy.co.za</a>	<b>R80million</b>	March to Jun 2012
Supply and install CMMS software, Train, implement and provide premium annual Support for 2sites-phase 1.	McCORMICK -Condiments (Pty) Ltd <a href="http://www.mccormick.com">www.mccormick.com</a>	James Rotherforth: <a href="mailto:James_Rotherforth@mccormick.co.za">James_Rotherforth@mccormick.co.za</a>	<b>R120k</b>	April 2012
Supply and install CMMS software, Train, implement and provide premium annual Support for 4 sites-phase 1.	ERIS PROPERTY GROUP (Pty) Ltd, <a href="http://www.eris.co.za">www.eris.co.za</a>	André Klopper: <a href="mailto:aklopper@eris.co.za">aklopper@eris.co.za</a>	<b>R300k</b>	October 2011 to March 2012
2-day long Supply and install CMMS software, Train, implement and provide premium annual Support	TOYOTA BOSHOKU-SA (Pty) Ltd <a href="http://www.toyota-boshoku.sa.com">www.toyota-boshoku.sa.com</a>	Garreth Keet: <a href="mailto:Garreth_Keet@Toyota-Boshoku.sa.com">Garreth_Keet@Toyota-Boshoku.sa.com</a>	<b>R800k</b>	August 2011
2-day long Upgrade CMMS software, implement and provide premium annual Support	RHODES FOOD GROUP (Pty) Ltd <a href="http://www.rhodesfoodgroup.com">www.rhodesfoodgroup.com</a>	Selwan Patel: <a href="mailto:patels@rhodesfoodgroup.com">patels@rhodesfoodgroup.com</a>	<b>R55.5k</b>	March 2011



Registration Number: [2010/095051/23](#) Tax No: [9520753162](#) VAT No: [4840258182](#) cidb No: 237299  
 P.O. Box 1200, Centurion, 0046. E-mail: [info@emainteconsulting.co.za](mailto:info@emainteconsulting.co.za) Website:  
[www.emainteconsulting.co.za](http://www.emainteconsulting.co.za)  
 P: +27 11 057 6463/+27 76 807 9388/ F: +27 86 699 3086/ +27865515575.

Supply CMMS software premium annual Support	EH WALTON (Pty) Ltd <a href="http://www.ehwalton.co.za">www.ehwalton.co.za</a>	Liz Wood: <a href="mailto:lizwood@ehwalton.co.za">lizwood@ehwalton.co.za</a>	<b>R12k</b>	Sept. 2010
Supply CMMS software and provide premium annual Support, Upgrade CMMS and provide basic training.	SUBLIME -SIC TECHNOLOGIES (Pty) Ltd <a href="http://www.sublime-sic.com">www.sublime-sic.com</a>	Corne Kriel: <a href="mailto:wihanne@sublime-sic.com">wihanne@sublime-sic.com</a> Stephan Bezuidenhout : <a href="mailto:stephanb@sublime-sic.com">stephanb@sublime-sic.com</a>	<b>R65k</b>	April 2012.
Supply CMMS software premium annual Support	HI-TECH AUTOMOTIVE <a href="http://www.hitechauto.co.za">www.hitechauto.co.za</a>	Shaun Stassen <a href="mailto:shaun@hitechauto.co.za">shaun@hitechauto.co.za</a>	<b>R8k</b>	Sept. 2009
Supply CMMS software and provide premium annual Support	NEW CONCEPT MINING <a href="http://www.ncm.co.za">www.ncm.co.za</a>	Henri Visser: <a href="mailto:enquiries@ncm.co.za">enquiries@ncm.co.za</a>	<b>R8k</b>	June 2009
Supply CMMS premium annual Support, Renewal.	AIR PRODUCTS SA (Pty) Ltd <a href="http://www.airproductsafrica.co.za">www.airproductsafrica.co.za</a>	Tracy Jooste or Thato Nkosi: <a href="mailto:joostet@apsap.co.za">joostet@apsap.co.za</a> ;	<b>R8k</b>	Nov. 2010
CMMS software, Train, implement and provide basic Support	MELCO CONVEYOR EQUIPMENT (Pty) Ltd <a href="http://www.melcoconveyors.com">www.melcoconveyors.com</a>	Anand Munian <a href="mailto:conveyors@melco.co.za">conveyors@melco.co.za</a>	<b>R8k</b>	July 2007



Registration Number: [2010/095051/23](#) Tax No: [9520753162](#) VAT No: [4840258182](#) cidb No: 237299  
P.O. Box 1200, Centurion, 0046. E-mail: [info@emainteconsulting.co.za](mailto:info@emainteconsulting.co.za) Website:  
[www.emainteconsulting.co.za](http://www.emainteconsulting.co.za)  
P: +27 11 057 6463/+27 76 807 9388/ F: +27 86 699 3086/ +27865515575.

TABLE (1A):

WORK PERFORMED	COMPANY/ENTITY	CONTACT PERSON AND EMAIL ASSRESS	CONTRACT AMOUNT	DATE OF COMPLETION
3-day Modern Maintenance Management Workshop	TFMC-Roseville Training centre <a href="http://www.tfmc.co.za">www.tfmc.co.za</a>	Drieke Schoeman : <a href="mailto:schoemmh3@tfmc.co.za">schoemmh3@tfmc.co.za</a>	R65.5k	February 25, 2011
2-day Modern Maintenance Management Workshop	Business Zone_ Manhattan hotel_PTA <a href="http://www.businesszone.co.za">www.businesszone.co.za</a>	Adelaide Muzanenhamo: <a href="mailto:adelaidechingu@gmail.com">adelaidechingu@gmail.com</a>		June 2, 2010
Supply CMMS software and provide basic Support	TRI-SCAN SOLUTIONS (Pty) Ltd	Dudley Lyle: <a href="mailto:dudley@adaptdrilling.co.za">dudley@adaptdrilling.co.za</a>	Free version	April 15, 2011
Provide basic Support on existing CMMS software.	NGWANE MILLS <a href="http://www.nmigroup.co.za">www.nmigroup.co.za</a>	Lewis Du-Pont: <a href="mailto:Lewis@ngwanemills.co.sz">Lewis@ngwanemills.co.sz</a>	Free	Feb 25, 2011
Provide basic Support on existing CMMS software.	CLAYTILE <a href="http://www.claytile.co.za">www.claytile.co.za</a>	Bennie Poffadder: <a href="mailto:bennie@claytile.co.za">bennie@claytile.co.za</a>	Free support	Jan 28, 2011



Registration Number: [2010/095051/23](#) Tax No: [9520753162](#) VAT No: [4840258182](#) cidb No: 237299  
P.O. Box 1200, Centurion, 0046. E-mail: [info@emainteconsulting.co.za](mailto:info@emainteconsulting.co.za) Website:  
[www.emainteconsulting.co.za](http://www.emainteconsulting.co.za)  
P: +27 11 057 6463/+27 76 807 9388/ F: +27 86 699 3086/ +27865515575.

### **MANAGEMENT OF EMAINTE CONSULTING:**

EMaintE's Current Business Manager's Profile Summary in brief is as follows:

#### **PERSONAL PROFILE: Gracious Banda.**

Position: Senior Engineering Consultant.  
Name of Firm: EMaintE Consulting  
Name of Staff: Gracious Banda  
Profession: Mechanical & Electrical Engineering  
Date of Birth: March 3, 1970

#### **Membership in Professional Societies:**

EC - IEng, CEng can.

IPlantE - Member (MIPlantE).

SOE - Member (MSOE).

SocEnv- CEnv can.

ICMEESA- As-Member (2013-2014 Council)

C&G - Licentiate (LCGI-2002)

PMI - Cand PMP. (Davis & Dean Trained 2012)

UNIDO - IEE (Industrial Energy Efficiency) Expert

IFE - Cand. Fire Protection Engineer.

OHSA - GCoC (Law) 2008

Highest Qualification: MSc Professional Engineering.



Registration Number: [2010/095051/23](#) Tax No: [9520753162](#) VAT No: [4840258182](#) cidb No: 237299  
P.O. Box 1200, Centurion, 0046. E-mail: [info@emainteconsulting.co.za](mailto:info@emainteconsulting.co.za) Website:  
[www.emainteconsulting.co.za](http://www.emainteconsulting.co.za)  
P: +27 11 057 6463/+27 76 807 9388/ F: +27 86 699 3086/ +27865515575.

#### Detailed Tasks Executed:

**General** - Evaluation and assessments of Systems, Analysis of existing O&M Management Systems, Promotion of Systematic approach to Modern Maintenance & Operations Management Methods, Promotion of Systematic approach to Optimization in Commercial and Industrial Energy Utilization, Facilitate, Train and implement Modern Enterprise Asset Care Management System Software [EAMS] or Computerized Maintenance Management System Software [CMMS], Facilitate, Train and implement ESO Courses as per UNIDO standard.

**Specific**- Planning, Engineering and implementation of related projects, developing of proposals, Technical Specifications, High Level reports and presentations, preparing project technical write-ups and detailed project costing, Overseeing and/or performing the design and budgeting of projects, Working with Apex Management to develop market growth plans, Cultivating and fostering customer relationships, Networking within industry.

**Years of Experience in Engineering: 25+ years.**

Company Website Link: <https://www.emainteconsulting.co.za/>

LinkedIn : <https://www.linkedin.com/in/gracious-banda-ieng-msc-eng-pgdip-eng-miplante-59748812>

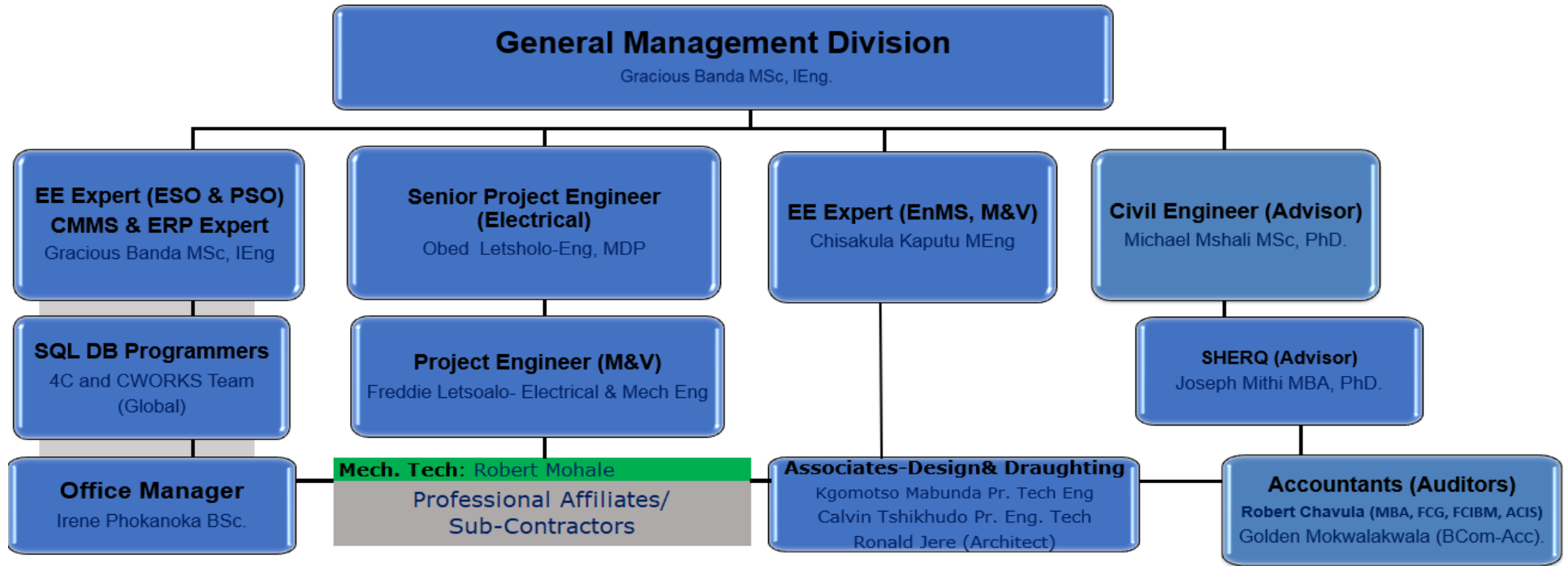
**Key Advisor: Dr Michael M. Mshali PhD, MSc (Civil Eng)**

EMaintE's Lead Expert advisor is consultant Dr Michael R. Mshali PhD (Civil), MSc (Civil), an accomplished practicing Professional Civil Engineer (PrEng), Researcher and Academic with a wealth of engineering experience in Operations and Management of systems spanning over more than 26 years across all Engineering Industry sectors of Commercial (including governmental organizations), Mining, Manufacturing and Process Works & Services industries.



Registration Number: 2010/095051/23 Tax No:9520753162 VAT No:4840258182 cidb No: 237299  
P.O. Box 1200, Centurion, 0046. E-mail: [info@emainteconsulting.co.za](mailto:info@emainteconsulting.co.za) Website:  
[www.emainteconsulting.co.za](http://www.emainteconsulting.co.za)  
P: +27 11 057 6463/+27 76 807 9388/ F: +27 86 699 3086/ +27865515575.

EMaintE ORGANISATION CHART:



ATTACHMENTS:

Documents attached are the property of EMaintE Consulting CC and should in no way be used in any way by other persons without prior agreement with EMaintE Consulting CC.

PRIVACY:

This document contains confidential information and is intended only for Partners in Business, Affiliates and Prospective Clients/Employers OF **EMAINTE CONSULTING**. If you are not the named addressee or designator, you should not disseminate, distribute or copy this information or part of it contained herein. Please notify the Author [EMaintE Consulting] immediately if you have received this document by mistake.





Registration Number: [2010/095051/23](#) Tax No: [9520753162](#) VAT No: [4840258182](#) cidb No: 237299  
 P.O. Box 1200, Centurion, 0046. E-mail: [info@emainteconsulting.co.za](mailto:info@emainteconsulting.co.za) Website:  
[www.emainteconsulting.co.za](http://www.emainteconsulting.co.za)  
 P: +27 11 057 6463/+27 76 807 9388/ F: +27 86 699 3086/ +27865515575.

Appendix1:

EMaintE Company documents:

**Certificate issued by the Companies & Intellectual Property Commission on Friday, April 22, 2016**

**Abridged Certificate for Annual Returns**

**CK2B** Registration Number: 2010 / 095051 / 23  
 Enterprise Name: EMAINTE CONSULTING

**ENTERPRISE INFORMATION**

Registration Number	2010 / 095051 / 23	
Enterprise Name	EMAINTE CONSULTING	
Enterprise Shortened Name		
Enterprise Translated Name		
Registration Date	2010/08/28	
Business Start Date	2010/08/28	
Enterprise Type	Close Corporation	
Enterprise Status	In Business	
Financial Year End	August	
Addresses	<u>POSTAL ADDRESS</u>	<u>ADDRESS OF REGISTERED OFFICE</u>
	P O BOX 11200 CENTURION	4321 ISIKALU STREET BIRCH ACRES
	0048	1618

**AUDITOR / ACCOUNTING OFFICER INFORMATION**

Auditor Name	Effective Date	Status	Type
M C DIALE	2010/05/28	Current	Auditor

**DIRECTOR / MEMBER INFORMATION**

ID No / Date of Birth	Surname	Name(s)	Status	Type
700303 XXXX 08 X	BANDA	GRACIOUS TIHAUKE	Active	Member

Physical Address: the ddt Campus - Block F  
77 Mainjies Street  
Sunnyside 0001

Postal Address: Companies  
P O Box 429  
Pretoria  
0001

Doors: 256  
Web: [www.dpc.co.za](http://www.dpc.co.za)  
Contact Centre: 085 100 2472 (CIPC)  
Contact Centre (International): +27 12 394 9500





Registration Number: 2010/095051/23 Tax No:9520753162 VAT No:4840258182 cidb No: 237299  
P.O. Box 1200, Centurion, 0046. E-mail: [info@emainteconsulting.co.za](mailto:info@emainteconsulting.co.za) Website:  
[www.emainteconsulting.co.za](http://www.emainteconsulting.co.za)  
P: +27 11 057 6463/+27 76 807 9388/ F: +27 86 699 3086/ +27865515575.



**the dti**  
Department  
Trade and Industry  
REPUBLIC OF SOUTH AFRICA



Companies and Intellectual  
Property Commission  
a member of the dti group

### B-BBEE CERTIFICATE FOR EXEMPTED MICRO ENTERPRISES

Issued by the Companies & Intellectual Property Commission (CIPC) on behalf of the Department of Trade and Industry. Based on the Financial Statements/Management Accounts and other information available on the latest financial year-end, the annual Total Revenue was R10,000,000.00 (Ten Million Rands) or less.

This Certificate serves as an Affidavit in terms of Code Series 000, Section 4.5 of the Amended Codes 2013.



Tracking Number: 9209738961



Enterprise Number: B2010086061

#### B-BBEE LEVEL 1 CONTRIBUTOR: 135% PROCUREMENT RECOGNITION

#### B-BBEE INFORMATION

Certificate Number	9209738961
Total Number of Shareholders	ONE (1) SHAREHOLDER(S)
Number of Black Shareholders	ONE (1) BLACK SHAREHOLDER(S)
Number of White Shareholders	ZERO (0) WHITE SHAREHOLDER(S)
Black Ownership Percentage	100% BLACK OWNERSHIP
Black Female Percentage	0% BLACK FEMALE OWNERSHIP
White Ownership Percentage	0% WHITE OWNERSHIP
B-BBEE Status	B-BBEE LEVEL 1 CONTRIBUTOR: 135% PROCUREMENT RECOGNITION
Date of Issue	31-October-2019
Expiry Date	30-October-2020

- Unemployed black people not attending and not required by law to attend an educational institution and not awaiting admission to an educational institution: 0%
- Black people who are youth as defined in the National Youth Commission Act of 1996: 0%
- Black people who are persons with disabilities as defined in the Code of Good Practice on employment of people with disabilities issued under the Employment Equity Act: 0%
- Black people living in rural and under developed areas: 0%
- Black military veterans who qualify to be called a military veteran in terms of the Military Veterans Act 18 of 2011: 0%

#### ENTERPRISE INFORMATION

Registration number	2010 / 095051 / 23
Enterprise Name	EMAINT CONSULTING CC
Registration Date	28-June-2010
Enterprise Type	Close Corporation
Enterprise Status	In Business

**Physical Address**  
the dti Campus - Block F  
77 Melndries Street  
Sunnyside 0001

**Postal Address: Companies**  
P O Box 429  
Pretoria  
0001

Docex: 256  
Web: [www.cipc.co.za](http://www.cipc.co.za)  
Contact Centre: 086 100 2472(CIPC)  
Contact Centre (International): +27 12 394 9500





Registration Number: 2010/095051/23 Tax No:9520753162 VAT No:4840258182 cidb No: 237299  
P.O. Box 1200, Centurion, 0046. E-mail: [info@emainteconsulting.co.za](mailto:info@emainteconsulting.co.za) Website:  
[www.emainteconsulting.co.za](http://www.emainteconsulting.co.za)  
P: +27 11 057 6463/+27 76 807 9388/ F: +27 86 699 3086/ +27865515575.



Established for the promotion and development  
of the knowledge and best practice of engineering

This is to certify that

**Gracious Banda**

in membership of the

**Society of Operations Engineers**

has been registered by the Engineering Council and is hereby authorised  
to use the style or title of

**Incorporated Engineer**

Chairman

Chief Executive Officer

Date of Registration 27 March 2014

Date of Issue 28 March 2014

Registration No. 557432  
This certificate is the property of the Engineering Council  
Returnable on request or de-registration





Registration Number: [2010/095051/23](#) Tax No: [9520753162](#) VAT No: [4840258182](#) cidb No: 237299  
P.O. Box 1200, Centurion, 0046. E-mail: [info@emainteconsulting.co.za](mailto:info@emainteconsulting.co.za) Website:  
[www.emainteconsulting.co.za](http://www.emainteconsulting.co.za)  
P: +27 11 057 6463/+27 76 807 9388/ F: +27 86 699 3086/ +27865515575.



UNITED NATIONS INDUSTRIAL DEVELOPMENT ORGANIZATION

## CERTIFICATE

This is to certify that

**Gracious Banda**

has participated in and completed the

### **Pump Systems Optimisation Expert Level Training Program**

*Presented by the*

UNITED NATIONS INDUSTRIAL DEVELOPMENT ORGANIZATION

*Under the framework of the "Industrial Energy Efficiency Improvement Project"*

**November 2013**

Mohamed Eisa  
UNIDO Representative  
Regional Office  
South Africa





Registration Number: [2010/095051/23](#) Tax No: [9520753162](#) VAT No: [4840258182](#) cidb No: 237299  
P.O. Box 1200, Centurion, 0046. E-mail: [info@emainteconsulting.co.za](mailto:info@emainteconsulting.co.za) Website:  
[www.emainteconsulting.co.za](http://www.emainteconsulting.co.za)  
P: +27 11 057 6463/+27 76 807 9388/ F: +27 86 699 3086/ +27865515575.

# soe IPlantE

engineering success together

This is to certify that

**Gracious Banda**

Was elected on the

**27 November 2008**

as

**Member**

First Joined 12/10/2005

and is a member of the IPlantE Professional Sector

President

Chief Executive



This certificate is issued by the Board of the Society of Operations Engineers and not by or with the authority of the Department of Trade and Industry or any other government department or any authority. Valid only with proof of current membership.



Registration Number: 2010/095051/23 Tax No:9520753162 VAT No:4840258182 cidb No: 237299  
P.O. Box 1200, Centurion, 0046. E-mail: [info@emainteconsulting.co.za](mailto:info@emainteconsulting.co.za) Website:  
[www.emainteconsulting.co.za](http://www.emainteconsulting.co.za)  
P: +27 11 057 6463/+27 76 807 9388/ F: +27 86 699 3086/ +27865515575.

# Engineering Council of South Africa



This is to certify that

*Michael Robert Sywell Mshali*

is registered as

*Professional Engineer*

in terms of the Engineering Profession Act, 2000  
(Act No. 46 of 2000)

Date

*28 October 2013*

Registration Number

*20130641*

President

Chief Executive Officer

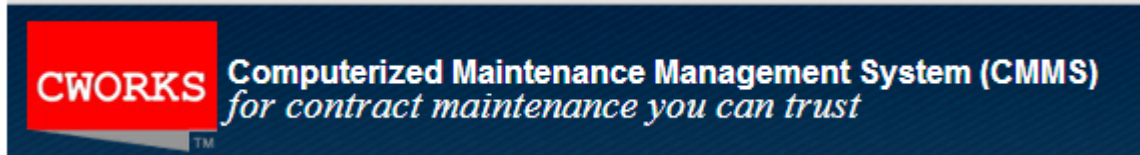




Registration Number: [2010/095051/23](#) Tax No: [9520753162](#) VAT No: [4840258182](#) cidb No: 237299  
 P.O. Box 1200, Centurion, 0046. E-mail: [info@emainteconsulting.co.za](mailto:info@emainteconsulting.co.za) Website:  
[www.emainteconsulting.co.za](http://www.emainteconsulting.co.za)  
 P: +27 11 057 6463/+27 76 807 9388/ F: +27 86 699 3086/ +27865515575.

## PROFESSIONAL AFFILIATES IN CMMS

### CWORKS SYSTEMS AND 4C SYSTEMS INTERNATIONAL- Profiles:



#### About CWORKS SYSTEMS INTERNATIONAL

Whether an organization is a world leader in facility management, manufacturing, oil and gas, airports, mining, healthcare, education, municipalities or others, many of them trust and depend on CWorks - a globally proven maintenance management software specialist - for no-nonsense, best practice solutions since 2001.

With our greatest strength and assets, first, as the web's most popular CMMS provider with a truly global community of users; second, as a business concern with more than a decade of operations, and third, by our continuous sourcing of the best talents in maintenance fields and information technologies; we aim to combine and leverage each of these aspects to deliver innovative, globally proven, no-nonsense, best practice solutions.

More importantly, CWorks history of its users going forward to win merit awards, for outstanding contributions to their organizations through good use of CWorks product is a testament to our CMMS and reputation.

CWORKS is publicly listed on the Malaysian Bourse and have been listed as a Deloitte Technology Fast 500 company in Asia-Pacific, among other awards and recognitions.

Today, our excellent support continues to grow and expand. CWorks has established offices and partners around the globe including - Asia, Europe, Africa, Australia, middle east, north and south America, with CWorks main head office and global development center in Kuala Lumpur.



Registration Number: [2010/095051/23](#) Tax No: [9520753162](#) VAT No: [4840258182](#) cidb No: 237299  
P.O. Box 1200, Centurion, 0046. E-mail: [info@emainteconsulting.co.za](mailto:info@emainteconsulting.co.za) Website:  
[www.emainteconsulting.co.za](http://www.emainteconsulting.co.za)  
P: +27 11 057 6463/+27 76 807 9388/ F: +27 86 699 3086/ +27865515575.

## CWORKS and 4C Management Teams

### **ABDUL RANI ACHMED-Chief Executive Officer**

Graduated from Purdue University in Electrical Engineering and holds a Master of Science in Engineering Business Management from Warwick University. Started his career in oil and gas and has worked for a variety of multinational companies including Schlumberger, Racal and Johnson Controls. He has been involved in CMMS implementation for many years and have designed, developed, implemented and operated systems such as a nationwide maintenance call and dispatch center. Also, he has implemented CMMS systems in a number of facilities including banks, education institutes, apartment complexes and hospitals locally and overseas. Rani is also a council member of the Master Builder Association Malaysia.

### **AZHAN AZMI-Executive Director**

Graduated from Universiti Teknologi MARA in Computer Science. He started his career developing and implementing IT systems at a renowned university in Malaysia. He later joined PROPEL-Johnson Controls where he was responsible for managing a variety of IT implementations for hospital support services. He was also responsible for the operation of a nationwide maintenance call center, handling calls and request nationwide. Before joining CWorks, he was manager of systems and networks for a large local dot com and was responsible for evaluating different technologies, databases and software tools.





Registration Number: [2010/095051/23](#) Tax No: [9520753162](#) VAT No: [4840258182](#) cidb No: 237299  
P.O. Box 1200, Centurion, 0046. E-mail: [info@emainteconsulting.co.za](mailto:info@emainteconsulting.co.za) Website:  
[www.emainteconsulting.co.za](http://www.emainteconsulting.co.za)  
P: +27 11 057 6463/+27 76 807 9388/ F: +27 86 699 3086/ +27865515575.

#### **ABD. MALIK MOHD. DIN-Chief Marketing Officer**

Graduated from Western Michigan University in 1985 with a Master of Science in Operation Research with Economics emphasis. He has more than 17 years of working experience in various industries including the Petroleum, Property Management, Integrated Facility Management, and Construction. He has worked with multinational and local corporations such as ESSO, L&G, Propel-Johnson Controls and Beta Strategy. Started in ESSO as Sales Representative and later promoted into planning and business development. He was then awarded for 3 consecutive years the Salesman ESSO Award in 1989, 1990 and 1991. In L&G he was assigned into the group audit and property management arm. In 1997 he joined PROPEL-Johnson Controls managing a nationwide call center and later enhanced the call center function into a data management and resource center.



Computerized Maintenance Management System

**4C CMMS SOFTWARE**  
**SUITABLE FOR ANY INDUSTRY**

#### **DAVID W.I. GRIFFITHS-Director, 4C Systems Inc. (North America).**

Dave Griffiths has over 40 years' experience in the management of maintenance and as a Plant Manager. For the past 15 years he has concentrated on the utilization of CMMS systems in the facilities, production and service industries. His focus has always been on making these systems non-complex and user-friendly so that data can be entered by those closest to the work being done. He believes that if the plant-floor personnel take ownership of the data it will be create a dynamic viable system and management analyses will be made on complete and relevant data.



Registration Number: [2010/095051/23](#) Tax No: [9520753162](#) VAT No: [4840258182](#) cidb No: 237299  
P.O. Box 1200, Centurion, 0046. E-mail: [info@emainteconsulting.co.za](mailto:info@emainteconsulting.co.za) Website:  
[www.emainteconsulting.co.za](http://www.emainteconsulting.co.za)  
P: +27 11 057 6463/+27 76 807 9388/ F: +27 86 699 3086/ +27865515575.

---

#### **PADMAN PRABHAKARAN-Director - 4C Systems Inc. (Australia)**

Graduated from The University of Bath, United Kingdom in Manufacturing Systems Engineering. Started his career in the oil and gas industry with SGS and specialized in metering and flow measurement. He then became PROPEL-Johnson Controls O&M Manager for the MoH hospital support service privatization project for the state of Sabah. Before joining CWorks and subsequently establishing 4C Systems, he was Johnson Controls Account Manager for the maintenance and facility management of all ExxonMobil service stations in Peninsular Malaysia. Thus far, he has project managed CMMS implementations in a variety of manufacturing plants and buildings.

In March 2015, Padman established 4C Systems Inc in Victoria, Australia and is currently working to expand the 4C market presence in the Australasia region.

#### **SUZANA ABDUL HAMID-Director - 4C Systems Inc. (Australia)**

Holds an advanced diploma in Information Technology from APIIT. Started her career doing sales and marketing for IFCA. Later she joined PROPEL-Johnson Controls and was assigned to the healthcare facility management IT division. She is well experienced in Asset Management Systems, Planned Preventive Maintenance Scheduling (PPM), CMMS systems, Inventory Control Management System, IT project and system implementation management.

Suzanna is currently based in Victoria, Australia and is heading administration and assisting 4C Systems to expand market presence in the region.

In summary, our products and services are truly well travelled and popular.